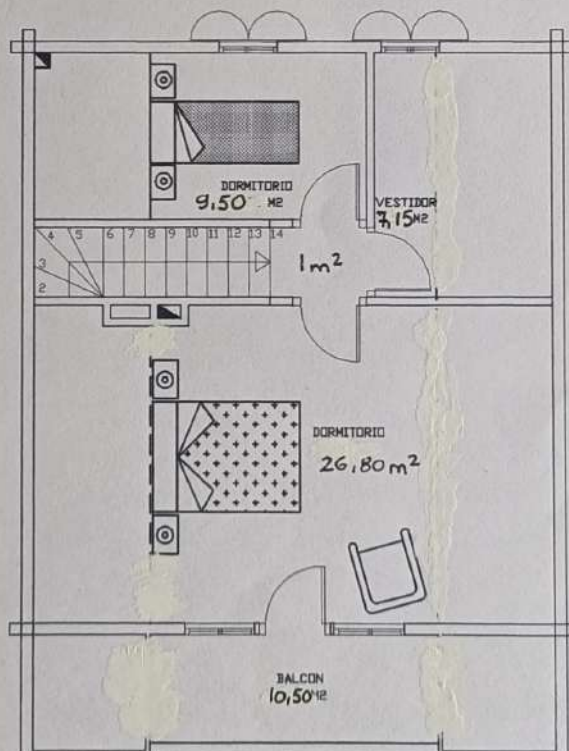


PLANTA BAJA

SUPERF. UTIL : 96,81 m²
 SUPERF. PORCHE-TERRAZA : 21 m²
 SUPERF. GARAGE : 15,00 m²
 TOTAL SUP. CONST. : 146,00 m²

~~112~~ + sup. cubierta : 143



PLANTA PRIMERA